



Total Imaging Solution Provider



Korea made software

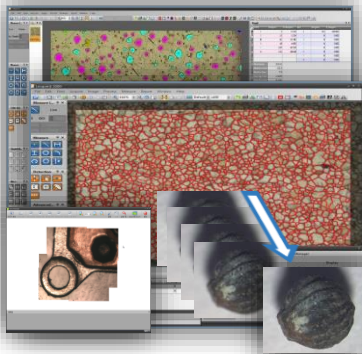


Leopard™

Analysis

i Series

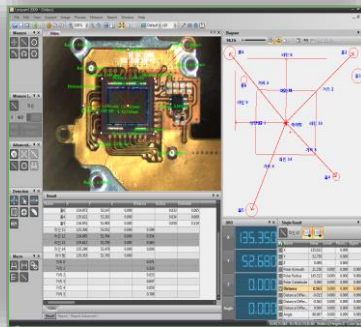
for inspection microscope



Metrology

m Series

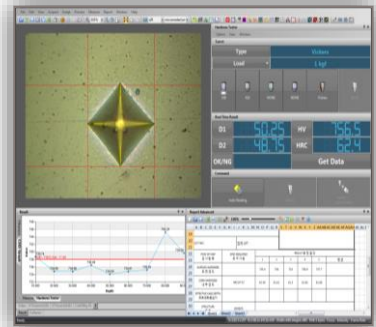
for measuring microscope



Hardness Tester

h Series

for hardness testing



i Series & m Series

It is a software that can analyze and measure images in real time in conjunction with all the inspection equipment using camera. Supports a variety of quick functions for analyzing high-resolution images in real time. And with an easy-to-use user interface, you can do your job quickly and easily. It supports a variety of cameras and supports optical inspection equipment such as biological / metal microscopes, tool microscopes, video microscopes and x-ray equipment.

h Series

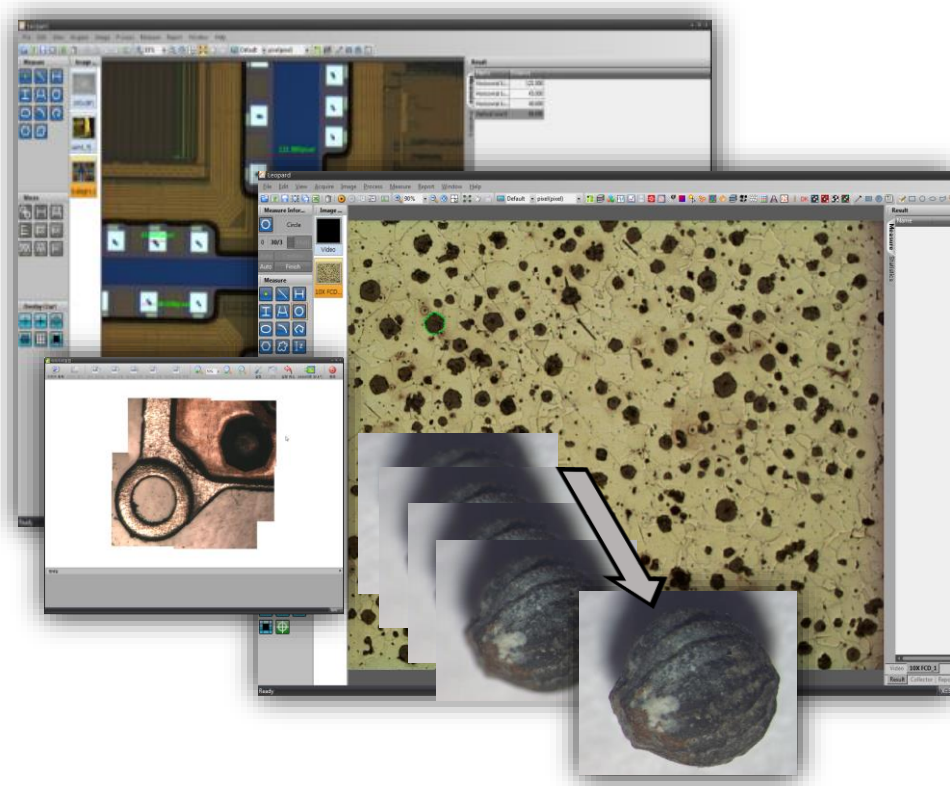
It is a software that can measure the hardness using the hardness meter. Hardness tester such as microspheres, Vickers, Loops, Brinell, etc. can be measured. In addition, various specifications are provided so that the measured values can be checked under various standards. You can control the equipment in the software and use it more conveniently.

LeopardTM

Multipurpose Image Analysis Software

i Series

iX Series



- Analyze and measure the images in real-time.
- Capable of various inspection devices using camera.
- Supports various and quick functions to analyze high resolution images in real time.
- User-friendly interface to perform the task easier and faster.
- Supports various cameras and optical inspection device.

Guideline

System Diagram



USB CAMERA



PC WORKSTATION

- Stereo microscope
- High power microscope
- Monocular microscope
- Etc..

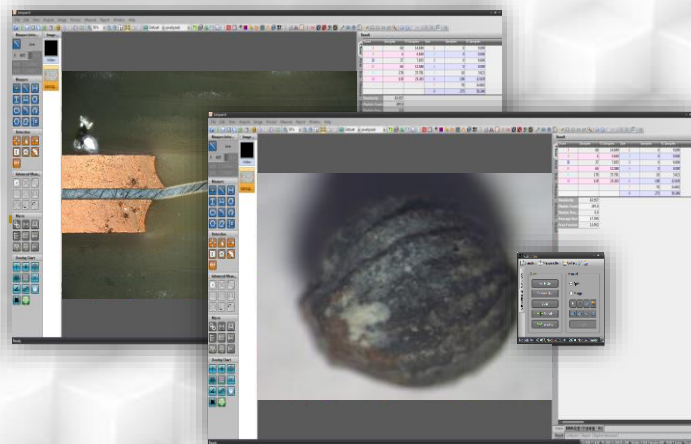
Leopard™
Multipurpose Image
Analysis Software

Capturing
Processing
Image Synthesis
Measurement
Report



MICROSCOPE

RESULTS



Software Interface

IMAGE BROWSER WINDOW

TOOLBAR

MEASURED RESULT DISPLAY COLUMN

The screenshot displays the Leopard software interface. The main window shows a live video feed of a metal sample with a blue measurement line. The interface includes a menu bar (File, Edit, View, Acquire, Image, Process, Measure, Report, Window, Help), a toolbar, and several panels: Measure Information, Image, Measure, Detection, Advanced Measure, Macro, and Overlay Chart. A 'Cast Iron' dialog box is open, showing 'Standard' and 'Manual' options. A 'Result' window displays a table of measured data.

Form	Samples	Area	Size	Samples	% Samples
I	67	14.649	1	0	0.000
II	4	0.849	2	0	0.000
III	37	7.855	3	0	0.000
IV	64	13.588	4	0	0.000
V	178	37.791	5	18	3.821
VI	119	25.265	6	108	22.929
			7	70	14.861
			8	275	58.386

Summary statistics:
Modularity = 63.057
Nodule Count = 297.0
Nodule Dens... = 0.0
Average Size = 37.790
Area Fraction = 32.052

LIVE MEASUREMENT WINDOW

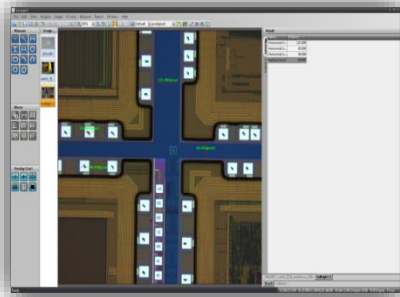
LIVE VIDEO DISPLAY WINDOW

PROCEDURE EDIT WINDOW

Software Functions

Basic/Live Measurement Tools

Live preview image on monitor to perform analysis without having to capture the image in-advance



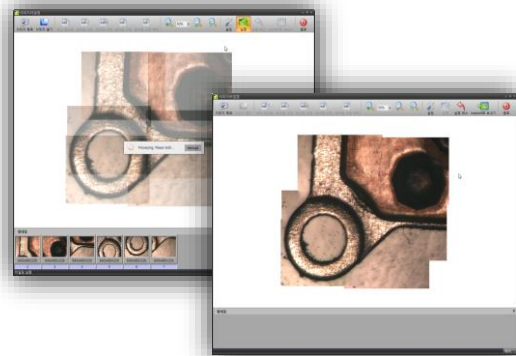
Multi Focus

Provides extended focus capability to overcome limited depth of focus in high magnification microscopes.



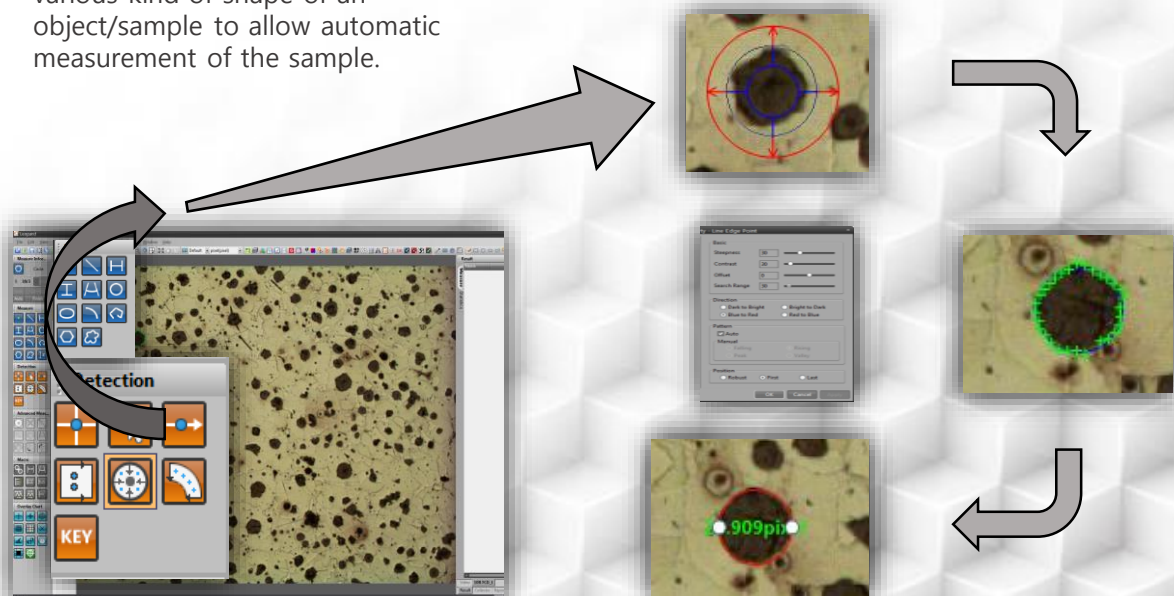
Manual Tiling

Large size (Field of View) specimen can be captured separately and combined to form one complete image.



Auto Edge Detection

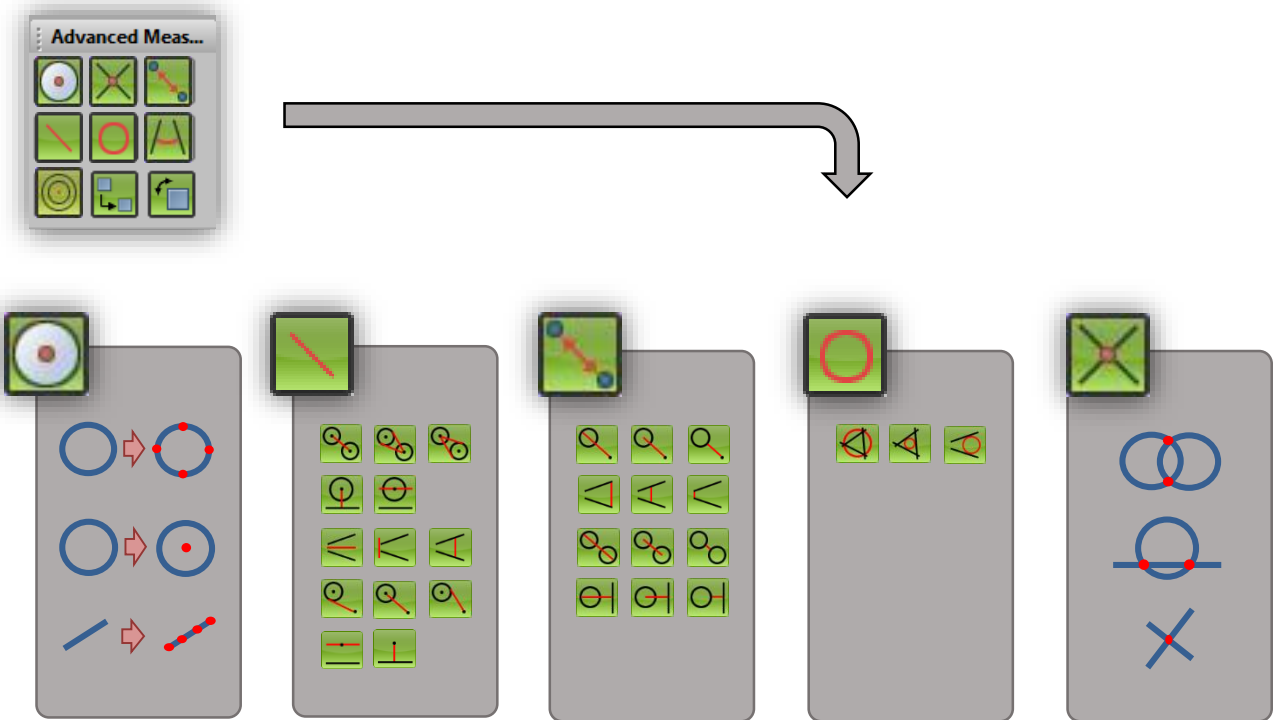
Automatically detected edges of various kind of shape of an object/sample to allow automatic measurement of the sample.



Software Functions

Advanced Measurement Tool

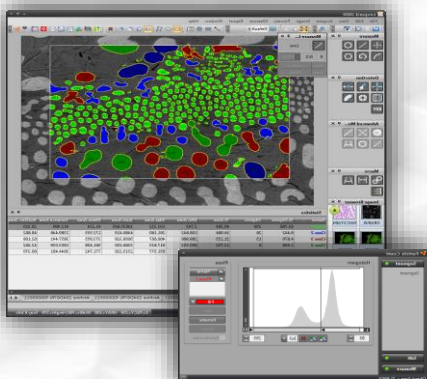
Tool for additional measurement



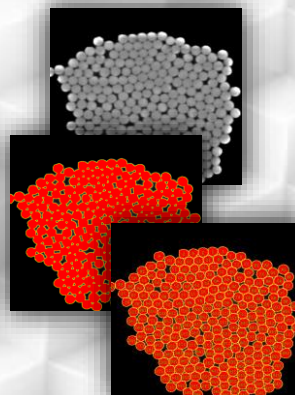
Particle Analysis

- Support analysis tools automatically detecting and analyzing the objects in the image
- Measure number, area and perimeter, etc of detected objects
- Object detection in various color spaces such as RGB, CMYK, HSI, HSV, HLS, YUV, YIQ, YCbCr, LUV, Lab, etc.
- Supports various AOI tools, specifies upper and lower limit values of the analysis
- Automatic/manual classification function

Particle detection and Analysis



Auto Classification and Edit



Report

The screenshot shows a report table with columns for various parameters. The table contains data for 44 rows, with columns for ID, Area, Perimeter, Circumference, and other metrics. The table is displayed in a window titled 'Report'.

ID	Area	Perimeter	Circumference	Class	Count
1	100.00	100.00	100.00	Class1	1
2	100.00	100.00	100.00	Class1	1
3	100.00	100.00	100.00	Class1	1
4	100.00	100.00	100.00	Class1	1
5	100.00	100.00	100.00	Class1	1
6	100.00	100.00	100.00	Class1	1
7	100.00	100.00	100.00	Class1	1
8	100.00	100.00	100.00	Class1	1
9	100.00	100.00	100.00	Class1	1
10	100.00	100.00	100.00	Class1	1
11	100.00	100.00	100.00	Class1	1
12	100.00	100.00	100.00	Class1	1
13	100.00	100.00	100.00	Class1	1
14	100.00	100.00	100.00	Class1	1
15	100.00	100.00	100.00	Class1	1
16	100.00	100.00	100.00	Class1	1
17	100.00	100.00	100.00	Class1	1
18	100.00	100.00	100.00	Class1	1
19	100.00	100.00	100.00	Class1	1
20	100.00	100.00	100.00	Class1	1
21	100.00	100.00	100.00	Class1	1
22	100.00	100.00	100.00	Class1	1
23	100.00	100.00	100.00	Class1	1
24	100.00	100.00	100.00	Class1	1
25	100.00	100.00	100.00	Class1	1
26	100.00	100.00	100.00	Class1	1
27	100.00	100.00	100.00	Class1	1
28	100.00	100.00	100.00	Class1	1
29	100.00	100.00	100.00	Class1	1
30	100.00	100.00	100.00	Class1	1
31	100.00	100.00	100.00	Class1	1
32	100.00	100.00	100.00	Class1	1
33	100.00	100.00	100.00	Class1	1
34	100.00	100.00	100.00	Class1	1
35	100.00	100.00	100.00	Class1	1
36	100.00	100.00	100.00	Class1	1
37	100.00	100.00	100.00	Class1	1
38	100.00	100.00	100.00	Class1	1
39	100.00	100.00	100.00	Class1	1
40	100.00	100.00	100.00	Class1	1
41	100.00	100.00	100.00	Class1	1
42	100.00	100.00	100.00	Class1	1
43	100.00	100.00	100.00	Class1	1
44	100.00	100.00	100.00	Class1	1

Minimum PC Requirement

FULL HD 1080p @ 59,94/50Hz		
OS	Desktop	Laptop
	Windows 7, 8 or 10 (with DirectX 11)	
MEMORY	At least 8GB or above	
CPU	Intel® Core™ i5 @2.4GHz, (5th generation or above)	Intel® Core™ i5 @2.4GHz, (5th generation or above)
HARD DISK SPACE	1GB required (SSD type recommended)	
CONNECTIONS	USB 2.0 xHCI host controller (Intel chipset recommended)	
INTEGRATED GRAPHICS	Intel® HD Graphics 4000	Intel® HD Graphics 4400
DEDICATED GRAPHICS CARD	Min: nVidia GeForce GT730 2GB DDR3/DDR5 128 bit. Recommended: nVidia GeForce GTX 750Ti DDR5 128bit	nVidia GeForce GT 740M with 2GB RAM
MONITOR RESOLUTION	1920x1080 (recommended) FULL HD	

Software recommended:

Windows 8: Windows 8 Camera App

Windows 10: Windows 10 Camera App

Camera Option & Adapter

OVOCUS



USB 2.0 Full HD Camera
(Opticam Korea)

SENTECH



USB 2.0 Full HD Camera
(Sentech Japan)



C-Mount Adapter

Zootos reserves the right to modify the product design and change the specifications for continuous product improvement without any prior notice.

Buyers are advised to refer valid and up-to-date quotation for final design and specifications.

Presented by: