



EIM Series

Inspection Microscope

- Built-in software for measurement (no PC connection required)
- High resolution with high definition optical image viewing
- Detent zoom lens for flexible zoom changing
- Built-in image capture and video record to SD card

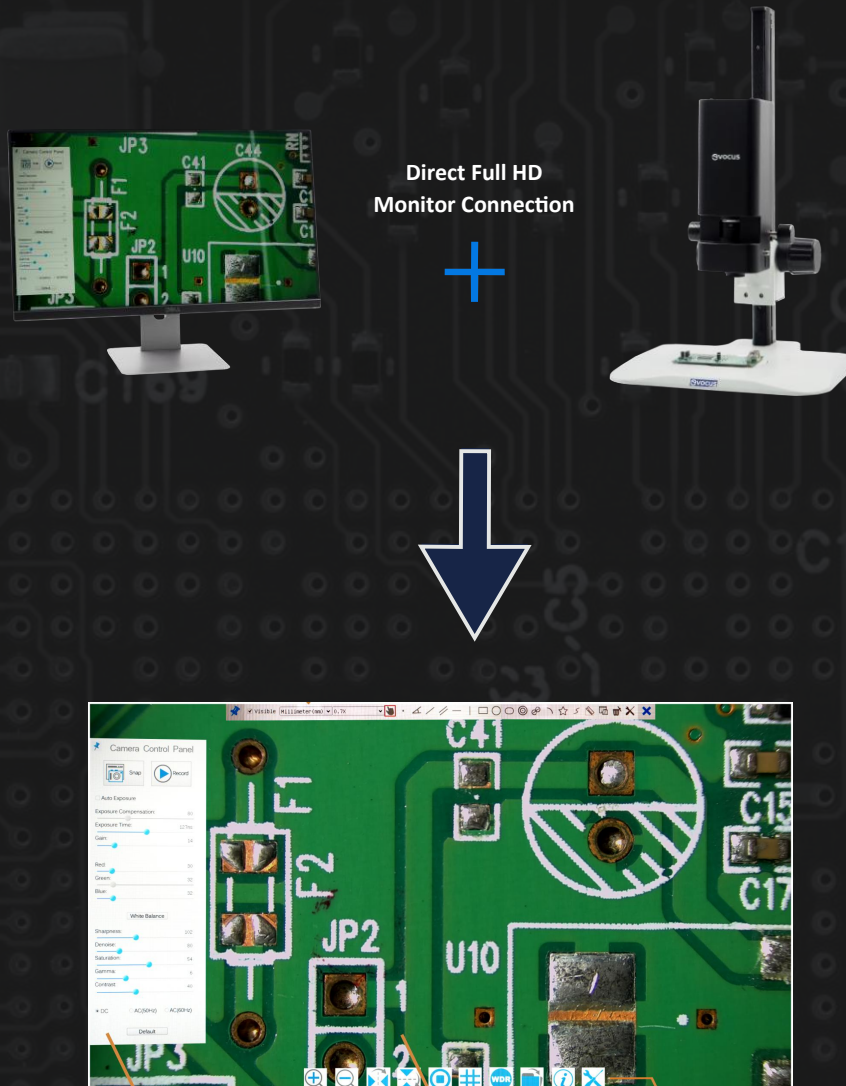


Features

- High resolution with big zoom ratio 1:8.3
- Parallel optical system
- Whole focus, uniform illumination
- Built-in software for measurement (no PC connection required)
- All in 1 (HDMI+WIFI+SD card) C-mount camera with high sensitivity CMOS sensor
- Simultaneous HDMI & WIFI output
- Built-in mouse control
- Built-in image capture & video record to SD card
- Built-in camera control panel for mouse control
- Built-in toolbar including zoom, mirror, comparison, freeze, cross, browser functions
- Built-in image & video browsing, display & play
- Ultra-Fine color engine with perfect color reproduction capability(USB)



System Diagram



Users can start doing measurement, without PC connection required!

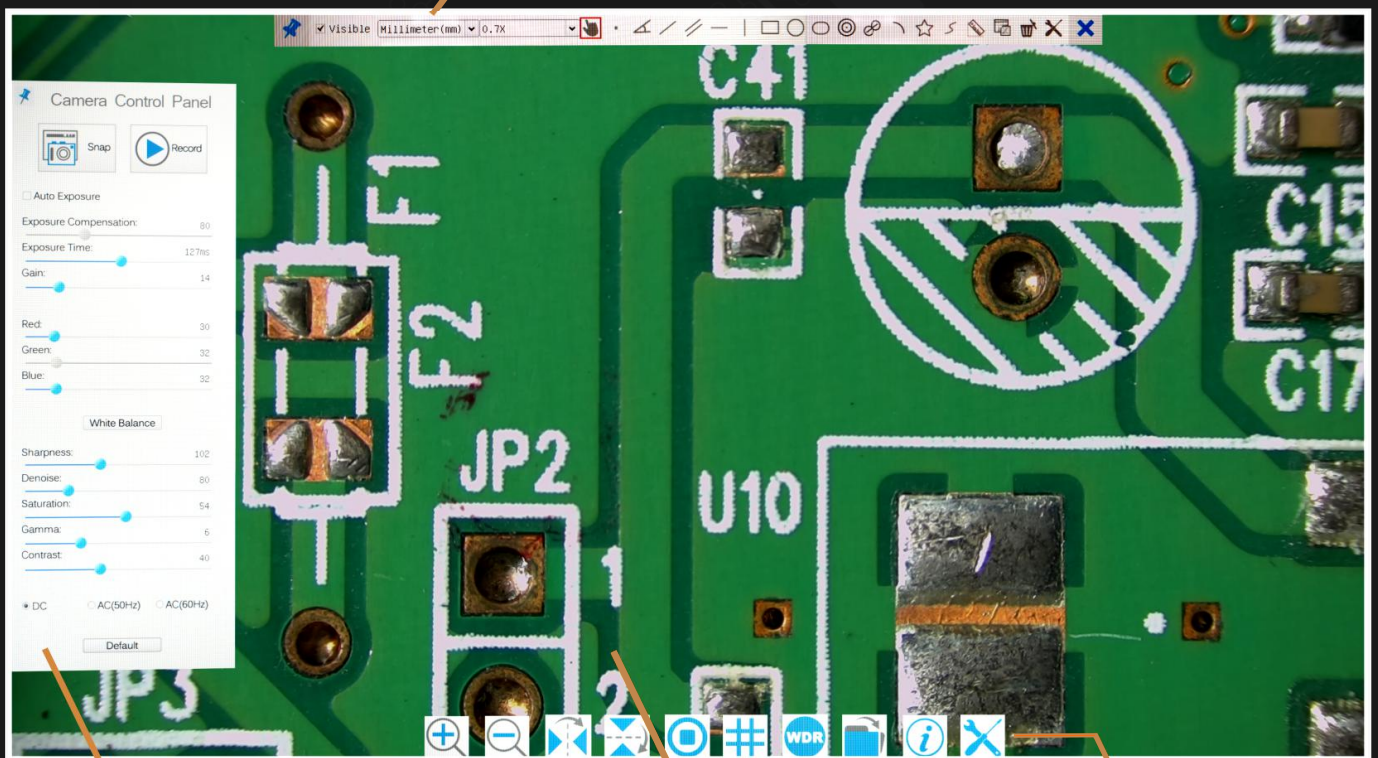
Potential Application

- Scientific Research, Education (Teaching, Demonstrating, and Academic Exchange)
- Digital Laboratory, Medical Research
- Industrial Visual (PCB Examination, IC Quality Control)
- Medical Treatment (Pathological Observation)
- Food (Microbial Colony Observation and Counting)
- Aerospace, Military (High Sophisticated Weapon)

Software Interface

Measurement Toolbar

- Circle
- Rectangle
- Vertical Line
- Horizontal Line
- Parallel Line
- Angle
- Calibration Setting



Camera Control Panel

- Capture Image
- Record Video
- Adjust Image Exposure
- Adjust Image Color
- Setting White Balance
- Adjust Sharpness
- Adjust Saturation

Live View Image

Menu Toolbar

- Zoom In/Out
- Flip/Rotate Image
- Freeze Live Image
- Indicator Line
- Wide Dynamic Range Setting
- Browse Save Image/Video
- Microscope Setting

Detent Zoom Lens with Knob



With this flexible zoom changing mechanism knob, user can detent zoom at each magnification point from 0.6x, 0.8x, 1.0x, 1.5x, 2.0x, 2.5x, 3.0x, 3.5x, 4.0x, 4.5x, and 5.0x.

User-friendly Interface and Button



The interface of this inspection microscope is a user-friendly. From this interface, user can turn On/Off their microscope, slot in SD card, and connect mouse to control live view function.

USB	USB Camera or Mouse
HDMI	HDMI Output
DC12V	12V Power In
SD	SD Card Slot
ON/OFF	Power On/Off Switch
LED	Power On Indicator

Solid and Rigid Build-Up



The casing is made up from hard steel material, hence giving this microscope a solid and rigid structure. It is also coated with matte black paint to prevent from rusting to withstand and maintain the condition of the microscope in any condition.

High Track Stand



Give user the ultimate range of working distance with the high track length (up to 500mm height).

Height of Track Stand	500mm
Travel Distance	460mm
Base Size	320 x 305 x 16mm
Reading Precision	0.1mm
Black and White Plate Diameter	95mm

Model	EIM
CCD Adaptor	0.5X
Total Magnification	0.3X – 2.5X
Field of View (mm)	16 x 12 – 1.9 x 1.4
Sensor & Size	1080P/2M/Sony IMX185 (C) 1/1.9" (7.20 X 4.05)
Pixel (µm)	3.75 x 3.75
G Sensitivity Dark Signal	1120 mv with 1/30s 0.15 mv with 1/30s
FPS Resolution	60 @ 1920 x 1080 (HDMI) 25 @ 1920 X 1080 (WiFi)
Binning	1 x 1
Exposure	0.06ms ~ 918ms
Other Specification for HDMI Output	
UI Operation	With USB Mouse
Image Capture	JPEG Format with 2M Resolution in SD Card
Video Record	ASF Format 1080P 30fps in SD Card
Camera Control Panel	Including Exposure, Gain, White Balance, Color Adjustment, Sharpness and Denoising Control
Toolbar	Including Zoom, Mirror, Comparison, Freeze, Cross, Browser Function
Operating Environment	
Operating Temperature (in centidegree)	-10 ~ 50
Storage Temperature (in centidegree)	-20 ~ 60
Operating Humidity	30 ~ 80%RH
Storage Humidity	10 ~ 60%RH
Power Supply	DC 12V/2A Adaptor

